

GPT.07.353.100  
Revision: 01

## BMW F 650 GS

### Alu-Rack Montagehinweise

Alle vom Motorrad gelösten Schrauben sind gemäß Herstellerangaben wieder zu montieren, oder mit von SW-MOTECH gelieferten Schrauben zu ersetzen. Falls nicht anderweitig definiert, diese Schrauben nach Tabelle anziehen.

M6	9,6 Nm
M8	23 Nm
M10	46 Nm

Gegebenenfalls Schrauben mit flüssiger Schraubensicherung einkleben.

Prüfen Sie nach 50 km alle Verbindungen auf festen Sitz.

Max. Zuladung 7,5 Kg inklusive Koffer und Adapter. Ist das Zuladungsgewicht des Fahrzeuges durch den Hersteller limitiert, gelten diese Grenzwerte.

SW-MOTECH GmbH & Co. KG  
Bahnhofstrasse 44d  
35282 Rauschenberg  
-Germany-

Tel.: ++ 49 (0) 6425 816 800  
Fax: ++ 49 (0) 6425 816 810

www.sw-motech.com



### Alu-Rack Mounting Instructions

SW-MOTECH products should be installed by a qualified, experienced motorcycle technician. If you are unsure of your ability to properly install a product, please have the product installed by your local motorcycle dealer. SW-MOTECH takes no responsibility for damages caused by improper installation.

All screws, bolts and nuts, including all replacement hardware provided by SW-MOTECH, should be tightened to the torque specified in the OEM maintenance manual for your motorcycle. If no torque specifications are provided in the OEM maintenance manual, the following torques may be used:


M6	9,6 Nm
M8	23 Nm
M10	46 Nm

All screws, bolts and nuts should be checked after driving the first 50 km to ensure that all are tightened to the proper torque.

Medium strength liquid thread-locker (i.e., "Loctite") should be used to secure all screws, bolts, and nuts.


Max. Load On Rear Carrier: 7,5 Kg (16,5 lbs) inclusive case and adapter or the motorcycle manufacturer's weight limit, whichever is less.

1 Alu-Rack  
Alu-Rack




silber/silver  
GPT.07.353.001 03  
Anzahl/ Pcs. 1

2 Unterbau  
Base Frame




GPT.07.353.002 01  
Anzahl/ Pcs. 1

3 Distanzbuchse  
Spacer



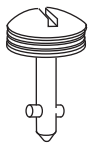
Da:16 Di:6,5 h:34  
Anzahl/ Pcs. 2

4 Distanzbuchse  
Spacer




Da:16 Di:6,5 h:37  
Anzahl/ Pcs. 2

5 Schnellverschluss  
Quicklock



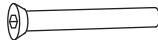
CAM.00.50E8-17Z  
Anzahl/ Pcs. 2

6 Sicherungsring  
Retaining ring



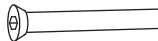
CAM.00.380-50F  
Anzahl/ Pcs. 2

7 Senkkopfschraube  
mit Innensechskant  
Countersunk Screw




silber/silver  
M6 x 70 DIN 7991  
Anzahl/ Pcs. 2

8 Senkkopfschraube  
mit Innensechskant  
Countersunk Screw

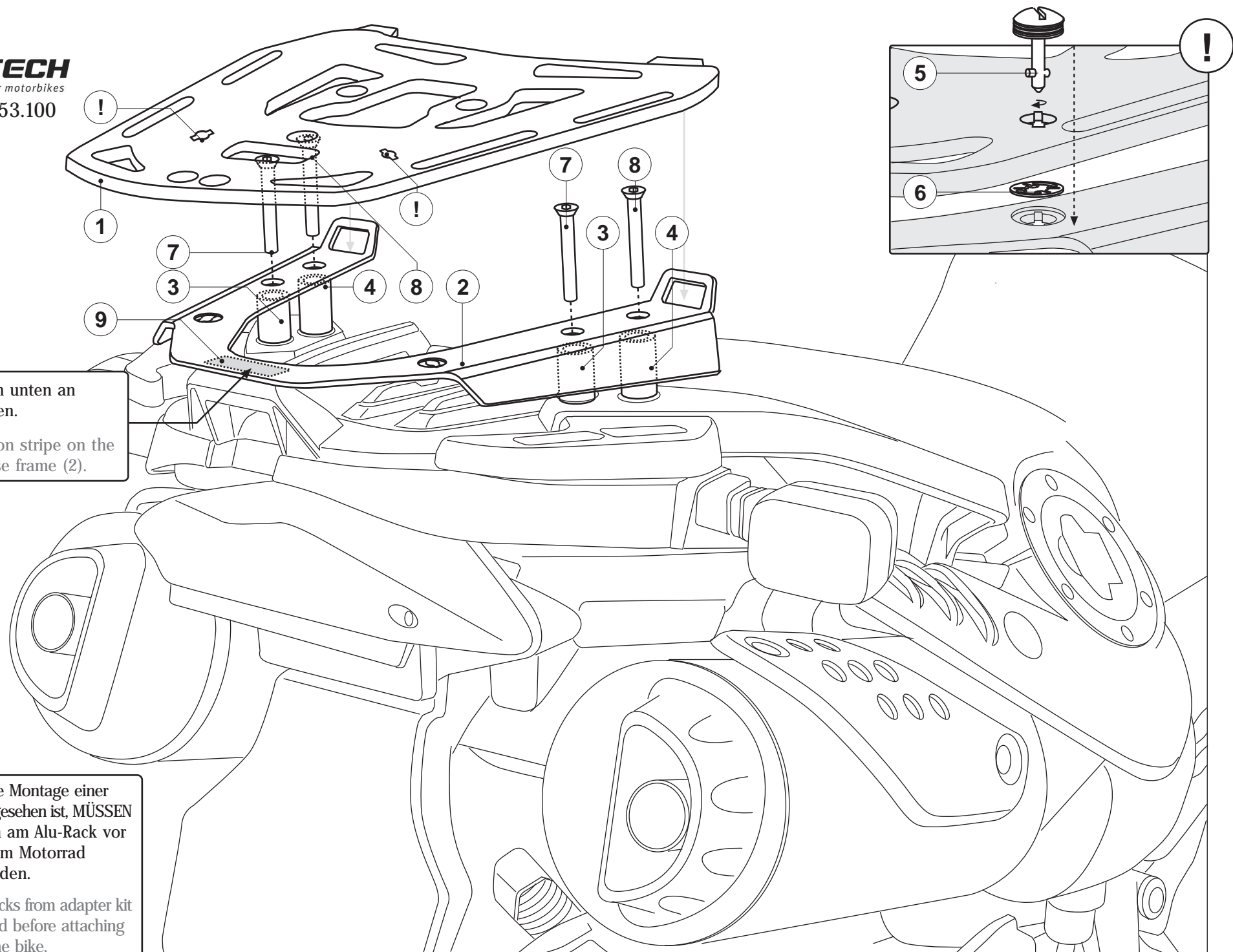


silber/silver  
M6 x 80 DIN 7991  
Anzahl/ Pcs. 2

9 Schonstreifen  
Protection Stripe



BTG.00.088.057 50mm  
Anzahl/ Pcs. 1



! Schonstreifen von unten an Untebau (2) kleben.  
Glue the protection stripe on the bottom of the base frame (2).

! Achtung: Falls die Montage einer Adapterplatte vorgesehen ist, MÜSSEN die Haltenocken am Alu-Rack vor dessen Anbau am Motorrad verschraubt werden.  
Attention: Cam-locks from adapter kit MUST be installed before attaching the alu-rack to the bike.